



[Bahay](#) [Mga istatistika](#) [Mga tao](#) [Populasyon](#) [Migrasyon sa ibang bansa](#) 2023-24 taon ng pananalapi

✓ Pinakabagong release

Migrasyon sa ibang bansa

Mga istatistika sa internasyonal na paglipat ng Australia, ayon sa estado at teritoryo, bansang kapanganakan, visa, edad at kasarian.

Panahon ng sanggunian 2023-24 taon ng pananalapi

Inilabas 13/12/2024

On this page

[Key statistics](#)
[Net overseas migration](#)
[Migrant arrivals](#)
[Migrant departures](#)
[Country of birth](#)
[Visa](#)
[Age and sex](#)
[State and territory](#)
[Related ABS publications](#)
[Data downloads](#)
[Methodology](#)
[Media releases](#)

Mga pangunahing istatistika

- Ang netong paglipat sa ibang bansa ay 446,000 noong 2023-24, bumaba mula sa 536,000 noong nakaraang taon
- Bumaba ng 10% ang mga migranteng pagdating sa 667,000 mula sa 739,000 pagdating noong nakaraang taon
- Ang pinakamalaking grupo ng mga migranteng dumating ay mga pansamantalang estudyante na may 207,000 katao
- Ang mga pag-alis ng migrante ay tumaas ng 8% hanggang 221,000 mula sa 204,000 na pag-alis noong nakaraang taon.

Ang data na ipinakita sa release na ito ay taunang, para sa mga taon na magtatapos sa Hunyo 30 maliban kung iba ang nabanggit. Para sa pinakabagong quarterly migration na mga pagtatantya, tingnan ang ABS publication [National, estado at teritoryo populasyon](https://www.abs.gov.au.translate.google/statistics/people/population/national-state-and-territory-population/latest-release?x_tr_sl=auto&x_tr_tl=tl&x_tr_hl=en&x_tr_pto=wapp) ([https://www-abs-gov-au.translate.google/statistics/people/population/national-state-and-territory-population/latest-release?x_tr_sl=auto&x_tr_tl=tl&x_tr_hl=en&x_tr_pto=wapp](https://www.abs.gov.au.translate.google/statistics/people/population/national-state-and-territory-population/latest-release?x_tr_sl=auto&x_tr_tl=tl&x_tr_hl=en&x_tr_pto=wapp)). Para sa mga pagtatantya ng panrehiyong paglilipat sa ibang bansa sa Australia, tingnan ang publikasyong ABS [Regional population](https://www-abs-gov-au.translate.google/statistics/people/population/regional-population/latest-release?x_tr_sl=auto&x_tr_tl=tl&x_tr_hl=en&x_tr_pto=wapp) (https://www-abs-gov-au.translate.google/statistics/people/population/regional-population/latest-release?x_tr_sl=auto&x_tr_tl=tl&x_tr_hl=en&x_tr_pto=wapp).

Karamihan sa data sa release na ito ay na-rounded, bilang isang resulta, ang mga kabuuan ng mga bahagi ay maaaring hindi magdagdag sa kabuuan.

Available na ang NOM TableBuilder

Ang quarterly net overseas migration data mula Setyembre Qtr 2006 hanggang Hunyo Qtr 2024 ay ilalabas sa [Tablebuilder](https://www-abs-gov-au.translate.google/statistics/microdata-tablebuilder/tablebuilder?x_tr_sl=auto&x_tr_tl=tl&x_tr_hl=en&x_tr_pto=wapp) (https://www-abs-gov-au.translate.google/statistics/microdata-tablebuilder/tablebuilder?x_tr_sl=auto&x_tr_tl=tl&x_tr_hl=en&x_tr_pto=wapp) sa 13 Disyembre 2024. Ang produktong ito ay ia-update kada quarter. Para sa karagdagang impormasyon, sumangguni sa [TableBuilder: Net](#)

[overseas migration \(https://www-abs-gov-au.translate.goog/statistics/microdata-tablebuilder/available-microdata-tablebuilder/net-overseas-migration? x tr sl=auto& x tr tl=tl& x tr hl=en& x tr pto=wapp\).](https://www-abs-gov-au.translate.goog/statistics/microdata-tablebuilder/available-microdata-tablebuilder/net-overseas-migration? x tr sl=auto& x tr tl=tl& x tr hl=en& x tr pto=wapp).)

Mga paghihigpit sa paglalakbay dahil sa covid-19

The Australian Government imposed travel restrictions on those travelling to or from Australia in March 2020, which were gradually lifted from 1 November 2021. Australian borders were reopened to most travellers from 21 February 2022.

Net sa ibang bansa migration

Ang netong paglipat sa ibang bansa ay ang netong pakinabang o pagkawala ng populasyon sa pamamagitan ng internasyonal na paglipat patungo at mula sa Australia.

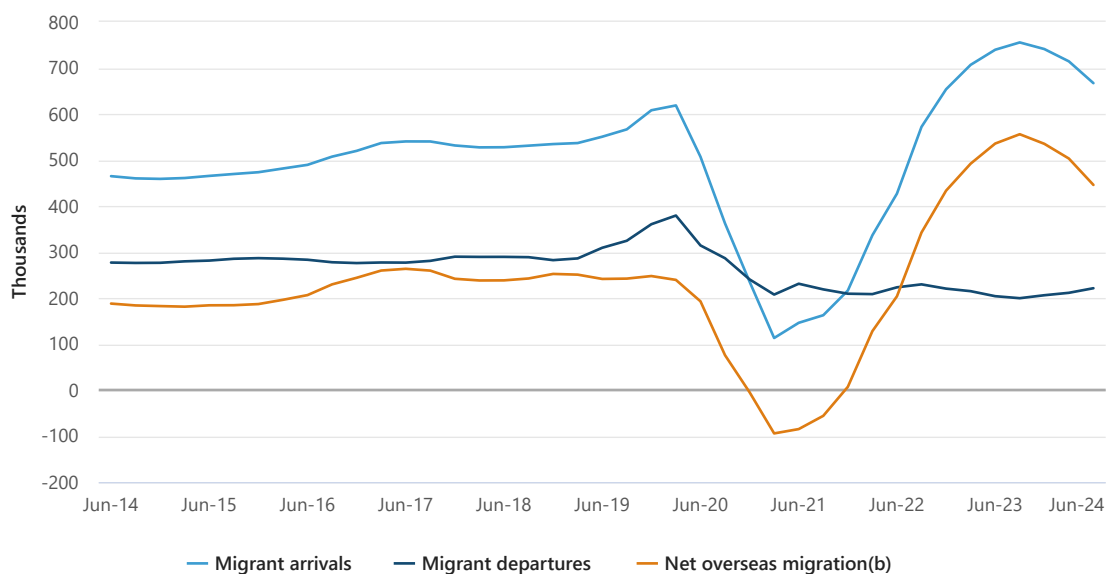
Sa taong nagtatapos sa Hunyo 30, 2024, ang paglipat sa ibang bansa ay nag-ambag ng netong pakinabang na 446,000 katao sa populasyon ng Australia. Bumaba ito mula sa naitalang 536,000 katao noong nakaraang taon.

Sa kasaysayan, mas maraming tao ang lumilipat sa Australia kaysa lumilipat palayo bawat taon, ibig sabihin, ang paglipat sa ibang bansa ay naging isang malaking pinagmumulan ng pakinabang ng populasyon para sa Australia kaysa sa pagkawala. Pansamantalang bumalik ang trend na ito nang maraming potensyal na migrante ang hindi pumunta sa Australia noong 2020 at 2021 dahil sa mga pagsasara ng hangganan at iba pang epekto ng pandemya ng COVID-19.

Ang mga hangganan ng Australia ay muling binuksan sa karamihan ng mga manlalakbay mula noong Pebrero 21, 2022, na nagdulot ng isang panahon ng naitalang net sa ibang bansa na migration na naayon sa isang catchup sa mga pagdating kasunod ng halos dalawang taon ng mga paghihigpit sa hangganan sa panahon ng pandemya ng COVID-19.

Kinakatawan ng 2023-24 ang unang taunang pagbaba sa netong paglipat sa ibang bansa mula nang alisin ang mga paghihigpit sa hangganan. Ang mas mababang antas na ito ay pinangunahan ng pagbaba ng mga migranteng dumating, higit sa lahat ay pansamantalang may hawak ng visa, habang ang mga pag-alis ay tumaas sa parehong panahon.

Graph 1.1 - Migration sa ibang bansa - Australia - pagtatapos ng taon(a)



a. Ang mga pagtatantya mula Setyembre quarter 2023 pataas ay preliminary. Tingnan ang katayuan ng rebisyon sa pahina ng pamamaraan.

b. Ang netong paglipat sa ibang bansa ay kinakalkula ng bilang ng mga migranteng dumating na binawasan ang bilang ng mga migranteng pag-alis .

Mga migranteng dumating

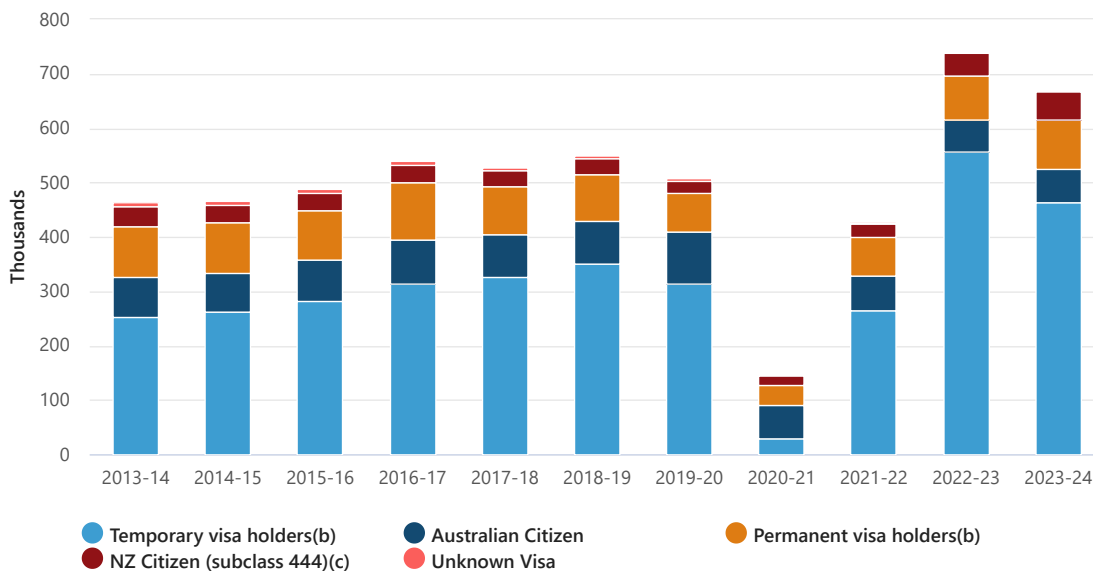
Noong 2023-24, ang bilang ng mga migranteng dumating ay bumaba sa 667,000, bumaba mula sa 739,000 noong nakaraang taon. Ito ay katumbas ng taunang pagbaba ng 10%. Noong 2022-23, nagkaroon ng taunang pagtaas ng 73%. Ang mga migranteng dumating noong 2023-24 ay kumakatawan sa unang pagbaba mula nang muling buksan ang mga hangganan.

Sa limang taon bago ang pandemya, ang average na bilang ng mga migranteng dumating ay 515,000 bawat taon na ang karamihan ay dumarating sa mga pansamantalang visa (307,000). Para sa mga dumating sa isang permanenteng visa, ang average ay 92,000. Para sa mga mamamayang Australian at New Zealand na dumarating ito ay 77,000 at 32,000 ayon sa pagkakabanggit.

Noong 2023-24, ang mga nasa pansamantalang visa (465,000) ay nagtala ng mas mababang volume kaysa sa nakaraang taon (557,000). Ang mga pagdating ng permanenteng may hawak ng visa (91,000), mga dating mamamayan ng Australia (60,000) at mga mamamayan ng New Zealand (51,000) gayunpaman, ay nagtala ng mas mataas na dami.

Ang mga pansamantalang may hawak ng visa ay ang pinakamalaking nag-ambag sa mga migranteng dumating noong 2023-24. Habang ang mga internasyonal na mag-aaral ay ang pinakamalaking pansamantalang grupo ng visa na may 207,000 pagdating, ito ay isang pagbaba mula sa 278,000 noong 2022-23. Kasama sa iba pang mga pansamantalang may hawak ng visa ang mga bisita (90,000 migrant arrival), working holiday makers (80,000), at pansamantalang skilled (49,000).

Graph 1.2 Mga migranteng dumating sa ibang bansa - visa at citizenship group(a)



a. Ang mga pagtatantya para sa 2023-24 ay preliminary. Tingnan ang katayuan ng rebisyon sa pahina ng pamamaraan.

b. Ang visa sa oras ng petsa ng pagdating ng migrasyon sa ibang bansa. Ang bilang ng mga visa dito ay hindi dapat malito sa impormasyon sa mga visa na ipinagkaloob ng Department of Home Affairs dahil ang mga visa ay maaaring ibigay sa pampang.

c. Ang visa subclass 444 ay ibinibigay sa mga mamamayan ng New Zealand pagdating sa Australia kung hindi pa sila nabigyan ng isa pang visa.

Pag-alis ng mga migrante

Noong 2023-24, tumaas ang bilang ng mga migranteng umalis sa 221,000, mula sa 204,000 noong nakaraang taon. Ito ay isang pagtaas ng 8% sa nakaraang taon. Bagama't inalis ang mga paghihigpit sa paglalakbay higit sa dalawang taon na ang nakaraan, ang bilang ng mga migranteng pag-alis ay nanatiling mas mababa kaysa sa antas ng pre-pandemic. Ang 2023-24 ay kumakatawan din sa unang taunang pagtaas ng mga pag-alis ng mga migrante mula nang muling buksan ang mga hangganan.

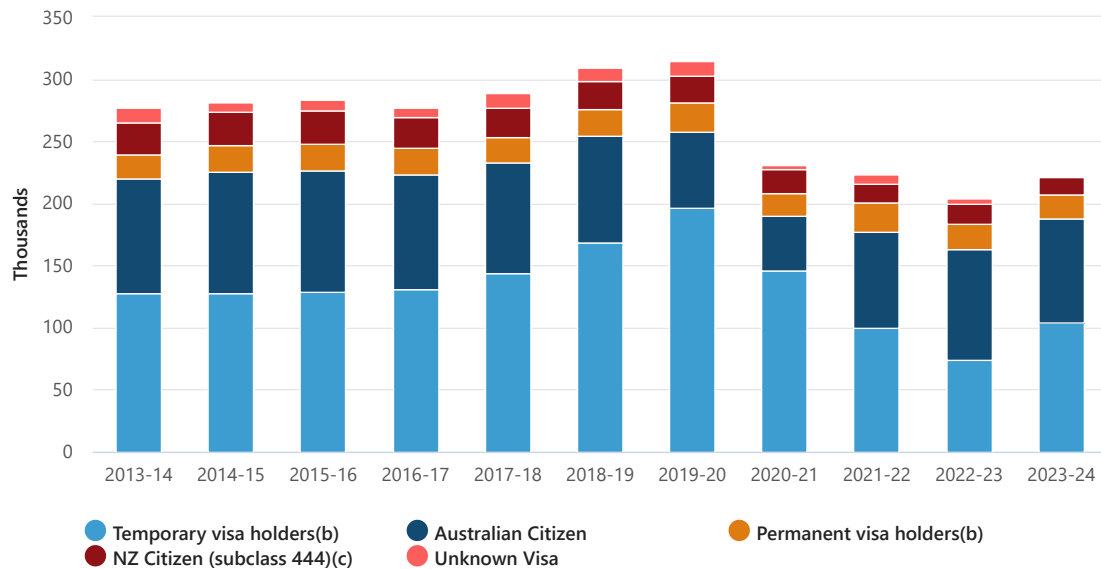
Sa limang taon bago ang pandemya, ang average na bilang ng mga migranteng pag-alis ay 288,000 bawat taon na ang pinakamalaking grupo ng mga pag-alis ay ang mga nasa pansamantalang visa (140,000). Para sa mga mamamayang Australian na umaalis, ang average ay 93,000, na sinusundan ng mga mamamayan ng New Zealand (25,000) at mga permanenteng may hawak ng visa (21,000).

Noong 2023-24, ang mga pag-alis para sa mga pansamantalang may hawak ng visa (104,000), mga mamamayan ng Australia (84,000), mga permanenteng may hawak ng visa (19,000), at mga mamamayan ng New Zealand (14,000) ang lahat ay naitala ang mas mababang antas kaysa sa

limang taong pre-pandemic average.

Dahil sa epekto ng mga paghihigpit sa paglalakbay ng COVID-19, napakababa ng bilang ng mga pansamantalang migrante na dumarating sa Australia sa panahon ng pandemya. Marami sa mga dumating sa mga pansamantalang visa pagkatapos alisin ang mga paghihigpit sa paglalakbay, tulad ng mga internasyonal na mag-aaral, ay nagsisimula nang umalis dahil sapat na oras ang lumipas mula sa kanilang unang pagdating pagkatapos na alisin ang mga paghihigpit sa hangganan. Halimbawa, tumaas ng 97% ang pag-alis ng mga migrante gamit ang pansamantalang student visa mula 2022-23, dahil ang ilan ay nakatapos ng kanilang pag-aaral at umuwi. Ito ay patuloy na magkakaroon ng pababang epekto sa netong paglipat sa ibang bansa habang ang dami ng pansamantalang pag-alis ng mga migrante ay tumataas.

Graph 1.3 Mga pag-alis sa ibang bansa - visa at mga grupo ng pagkamamamayan(a)



a. Ang mga pagtatantya para sa 2023-24 ay preliminary. Tingnan ang katayuan ng rebisyon sa pahina ng pamamaraan.

b. Ang visa sa oras ng petsa ng pag-alis ng manlalakbay sa ibang bansa. Ang bilang ng mga visa dito ay hindi dapat malito sa impormasyon sa mga visa na ipinagkaloob ng Department of Home Affairs dahil ang mga visa ay maaaring ibigay sa pampang.

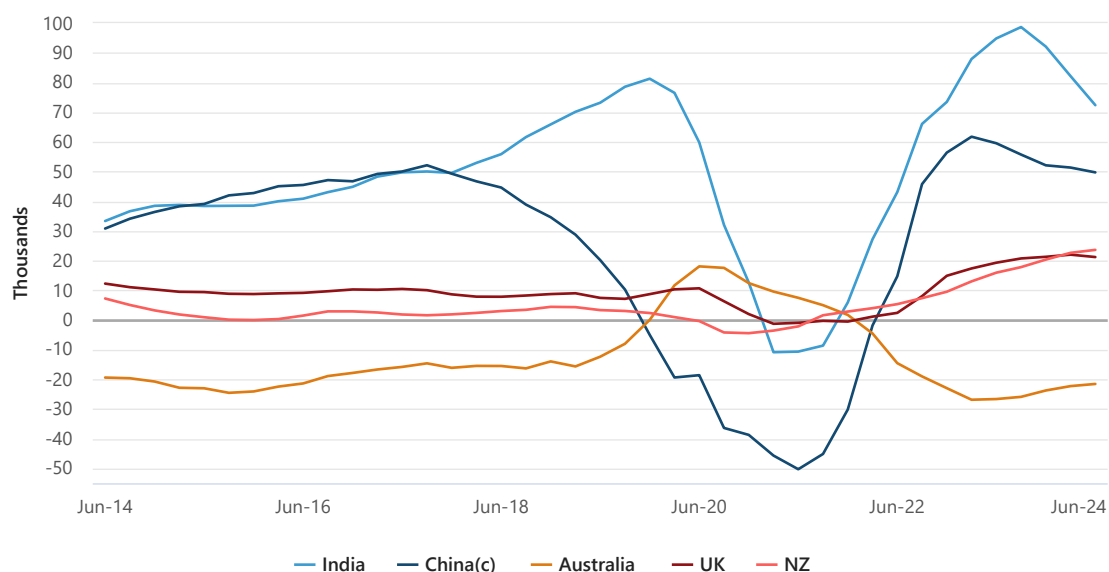
c. Ang visa subclass 444 ay ibinibigay sa mga mamamayan ng New Zealand pagdating sa Australia kung hindi pa sila nabigyan ng isa pang visa.

Bansang sinilangan

Net sa ibang bansa migration

In 2023-24, the top five countries of birth for overseas migrants were India, China, Australia, the United Kingdom and New Zealand. Analysis over the previous decade shows steady increases prior to the pandemic for migrants born in India and China. However, for the Chinese-born, a decline started from late 2017, well before the pandemic began.

Graph 2.1 Net overseas migration(a) - top 5 countries of birth(b) - year ending



a. Estimates from September quarter 2023 onwards are preliminary. See revision status on the methodology page.

b. Top 5 countries of birth by the sum of migrant arrivals and migrant departures in year ending June 2024.

c. Excludes SARs and Taiwan.

In 2023-24, net gains from India and China were lower than the previous year. Net gains from the United Kingdom and New Zealand were higher than the previous year.

In 2023-24, there was a net loss of 22,000 Australian-born from the population. This is in line with the historical trend observed before the pandemic of a net loss each year. During 2020-21, the pandemic and associated travel restrictions caused this long-term pattern to be reversed with a net gain of 7,500 Australian-born residents added to the population.

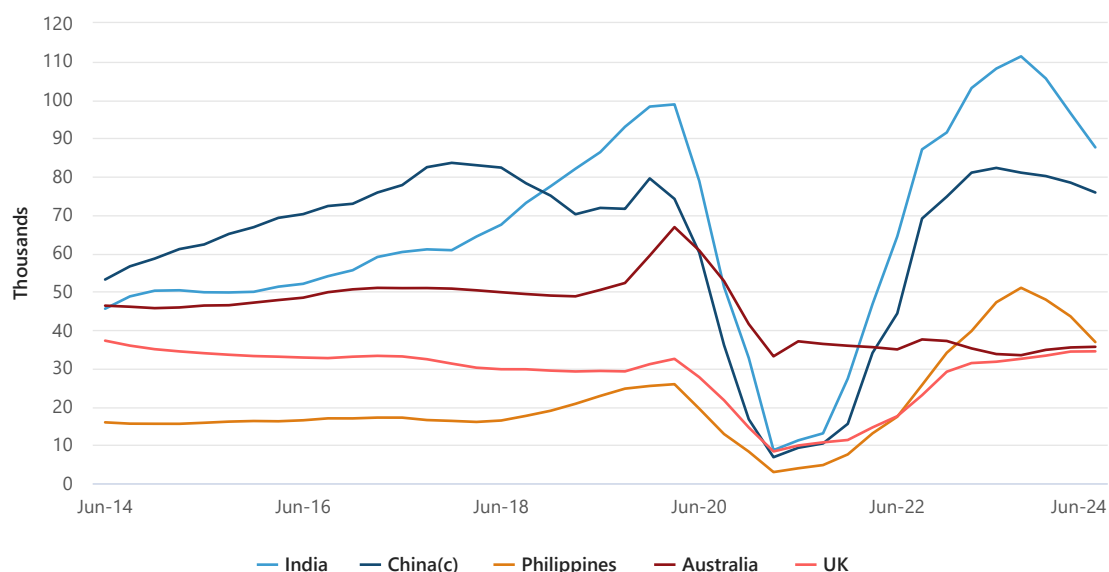
Mga pagdating

In 2023-24 the top five countries of birth for migrant arrivals were India, China, the Philippines, Australia and the United Kingdom. Compared to 2022-23, the number of migrant arrivals decreased for all these countries except Australia and the United Kingdom, which both increased. Arrivals from India, China, the Philippines and the United Kingdom were higher than pre-pandemic levels in 2018-19.

Analysis of these five countries of birth over the years prior to the pandemic, shows that migrant arrivals had:

- increased for Indian-born – driven by international students (mainly for the higher education sector)
- increased for Chinese-born (also driven by international students) until experiencing a decrease in 2018, prior to the effects of the pandemic
- been steady for people born in the Philippines until experiencing an increase prior to the effects of the pandemic
- been steady for Australian-born with around 50,000 arrivals returning to Australia each year
- decreased for UK-born – due to declines in working holiday makers, those on temporary skilled visas and permanent visa holders.

Graph 2.2 Overseas migrant arrivals(a) - top 5 countries of birth(b) - year ending



a. Estimates from September quarter 2023 onwards are preliminary. See revision status on the methodology page.

b. Top 5 countries of birth by the number of migrant arrivals in year ending June 2024.

c. Excludes SARs and Taiwan.

In addition to recent high levels of migration now beginning to decrease, the graph above indicates changes in travel behaviour of those who had arrived prior to the pandemic but were impacted by it and the associated international travel restrictions.

For example, Australian-born migrant arrivals increased from September 2019 to March 2020. This was largely due to some Australian expatriates having changed their travel plans after arriving prior to COVID-19 occurring and then remaining in Australia, despite originally having planned a short trip. Because of this, some who were planning short visits actually stayed longer and became overseas migrant arrivals.

This behaviour was also observed for other nationalities such as those from China and India. Some in the older age groups arrived on visitor visas but ended up staying long enough to be counted as migrant arrivals.

Mga pag-alis

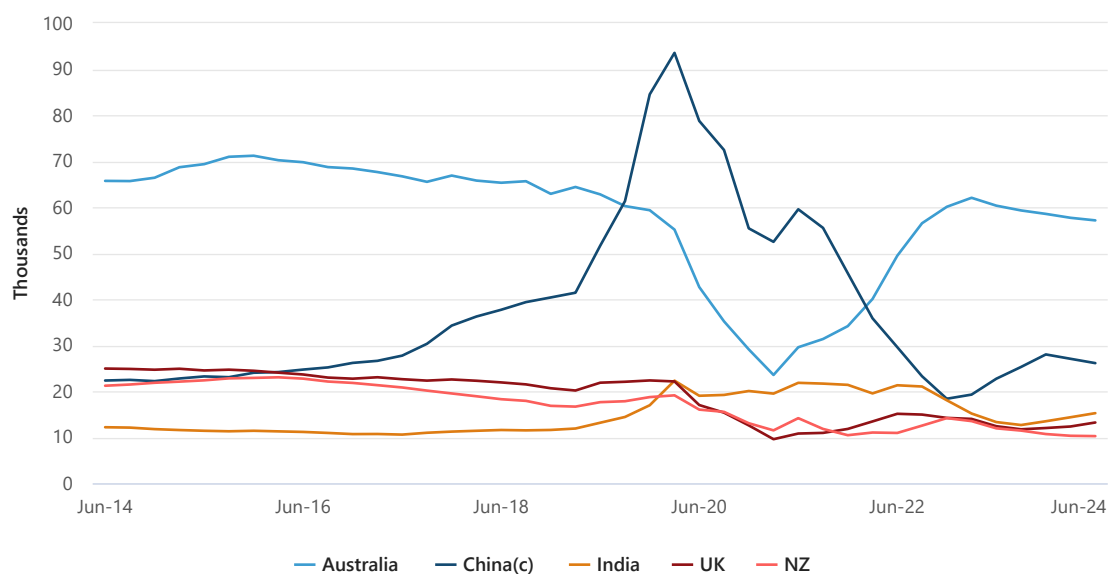
In 2023-24, the top five countries of birth for migrant departures were Australia, China, India, the United Kingdom and New Zealand. The number of migrant departures increased in 2023-24 for those born in China, India and the United Kingdom when compared with 2022-23, whereas the number of migrant departures for those born in Australia and New Zealand decreased.

Departures for those born in Australia, China, the United Kingdom and New Zealand were lower than pre-pandemic levels in 2018-19, whereas Indian-born departures were higher.

Analysis of migrant departures for these five countries of birth in the years prior to the pandemic shows that:

- those born in Australia were the largest group departing each financial year
- departures of Chinese-born increased due to international students departing. However, due to COVID-19, many were recorded as migrant departures in 2019-20 when they had left Australia prior to the pandemic for a short trip but were unable to return to Australia to continue their studies
- Indian-born migrant departures remained stable, even though there were increases in international student arrivals during this period. Like China, in 2019-20 some were recorded as migrant departures after being unable to return to Australia due to the pandemic
- UK-born migrant departures comprised mostly of Australian Citizens born in the UK, working holiday makers, temporary skilled and permanent visa holders
- the number of departures for those born in NZ increased at the start of the decade, reaching a peak of 23,000 (year ending March 2016), before gradually declining for the remainder of the decade.

Graph 2.3 Overseas migrant departures(a) - top 5 countries of birth(b) - year ending



a. Estimates from September quarter 2023 onwards are preliminary. See revision status on the methodology page.

b. Top 5 countries of birth by the number of migrant departures in year ending June 2024.

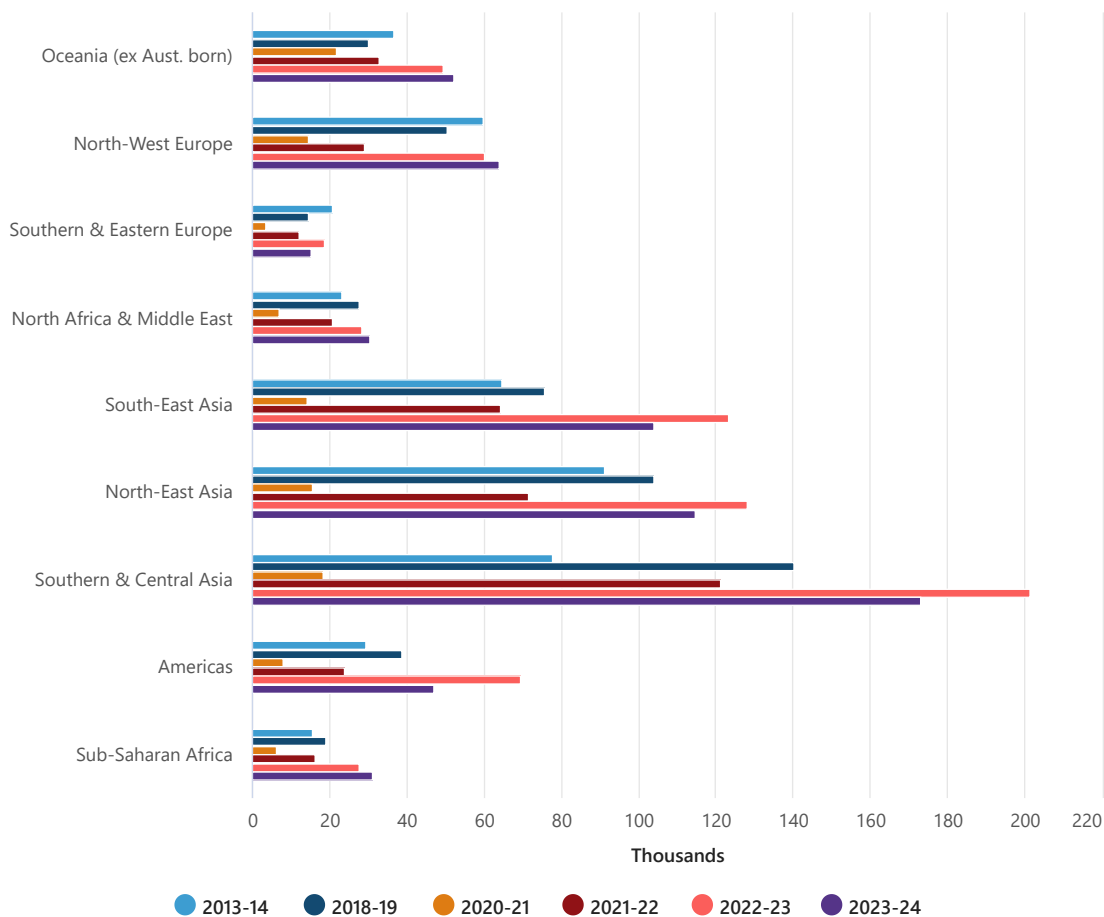
c. Excludes SARs and Taiwan.

Mga rehiyon sa daigdig

The mix of countries where Australia's migrant arrivals are born has changed considerably over time. In 2023-24, the region which contributed the most arrivals was Southern and Central Asia with 26%.

A decade ago, in 2013-14, the largest group (20%) was from North-East Asia. In 2018-19, the year prior to the pandemic, this had changed with the largest group (25%) of migrant arrivals coming from Southern and Central Asia. This is a pattern which has continued post-pandemic.

Graph 2.4 Overseas migrant arrivals(a) - world regions of birth(b) - selected years



a. Estimates for 2023-24 are preliminary. See revision status on the methodology page.

b. Based on the Standard Australian Classification of Countries. See classifications on the methodology page.

Visa

Mga pagdating

Migrant arrivals decreased overall by 10% in 2023-24. However, the year-on-year changes varied among the different visa groups. Migrant arrivals for:

- temporary visa holders remained higher than the pre-pandemic levels for most temporary groups but overall were down 16% on the previous year
- permanent visa holders increased by 13%
- international students saw a decrease of 26%
- working holiday makers increased by 8%.

Table 3.1 Overseas migrant arrivals by visa and citizenship groups(a)

	2018-19 pre-COVID	2022-23	2023-24	2022-23 to 2023-24 annual change
Visa groupings(b)	'000	'000	'000	'000
Permanent visas				
Family	24.3	21.1	23.1	2.0
Skilled (permanent)	38.2	35.4	40.7	5.3
Special eligibility & humanitarian	15.3	13.0	17.5	4.5
Other (permanent)	7.5	10.9	9.6	-1.4
Total permanent visas	85.4	80.4	90.9	10.5
Temporary visas				
Student - vocational education and training	22.6	38.1	19.8	-18.3
Student - higher education	111.3	177.4	147.5	-29.9
Student - other	30.4	62.2	39.4	-22.8
Skilled (temporary)	32.6	49.2	48.8	-0.4
Working holiday	49.1	73.7	79.6	5.9
Visitors	91.2	108.3	90.0	-18.4
Other (temporary)	13.4	47.6	39.6	-8.0
Total temporary visas	350.7	556.6	464.8	-91.8
New Zealand citizens (subclass 444)(c)	30.5	42.7	51.1	8.4
Australian citizens (no visa required)	78.9	58.8	60.0	1.3
Total(d)	550.4	739.4	666.8	-72.6

a. Estimates for 2023-24 are preliminary. See revision status on the methodology page.

b. The visa at time of traveller's overseas migration arrival date. The number of visas here should not be confused with information on visas granted by the Department of Home Affairs as visas can be granted onshore.

c. Visa subclass 444 is granted to New Zealand citizens upon arrival in Australia if they have not already been granted another visa.

d. Includes unknown visas.

Mga pag-alis

Migrant departures increased overall by 8% in 2023-24, however the year-on-year changes varied among the different visa groups. Migrant departures for:

- permanent visa holders decreased by 6% from the previous year
- temporary visa holders increased by 40%
- working holiday makers increased by 264%
- international students increased by 97%.

Table 3.2 Overseas migrant departures by visa and citizenship groups(a)

	2018-19 pre-COVID	2022-23	2023-24	2022-23 to 2023-24 annual change
Visa groupings(b)	'000	'000	'000	'000
Permanent visas				
Family	5.8	5.6	5.1	-0.5
Skilled (permanent)	7.5	4.9	5.0	0.2
Special eligibility & humanitarian	0.2	0.1	0.2	0.1
Other (permanent)	8.1	9.6	8.5	-1.0
Total permanent visas	21.5	20.1	18.9	-1.3
Temporary visas				
Student - vocational education and training	17.0	4.6	7.6	3.0
Student - higher education	40.9	7.9	17.3	9.3
Student - other	9.5	3.0	5.7	2.7
Skilled (temporary)	15.7	5.6	6.9	1.2
Working holiday	25.1	3.0	10.8	7.8
Visitors	27.3	18.4	17.5	-0.9
Other (temporary)	33.0	31.9	38.3	6.5
Total temporary visas	168.5	74.3	104.0	29.6
New Zealand citizens (subclass 444)(c)	22.4	16.4	14.1	-2.3
Australian citizens (no visa required)	85.9	89.2	84.2	-5.0
Total(d)	309.1	203.9	221.2	17.3

a. Estimates for 2023-24 are preliminary. See revision status on the methodology page.

b. The visa at time of traveller's overseas migration departure date. The number of visas here should not be confused with information on visas granted by the Department of Home Affairs as visas can be granted onshore.

c. Visa subclass 444 is granted to New Zealand citizens upon arrival in Australia if they have not already been granted another visa.

d. Includes unknown visas.

Edad at kasarian

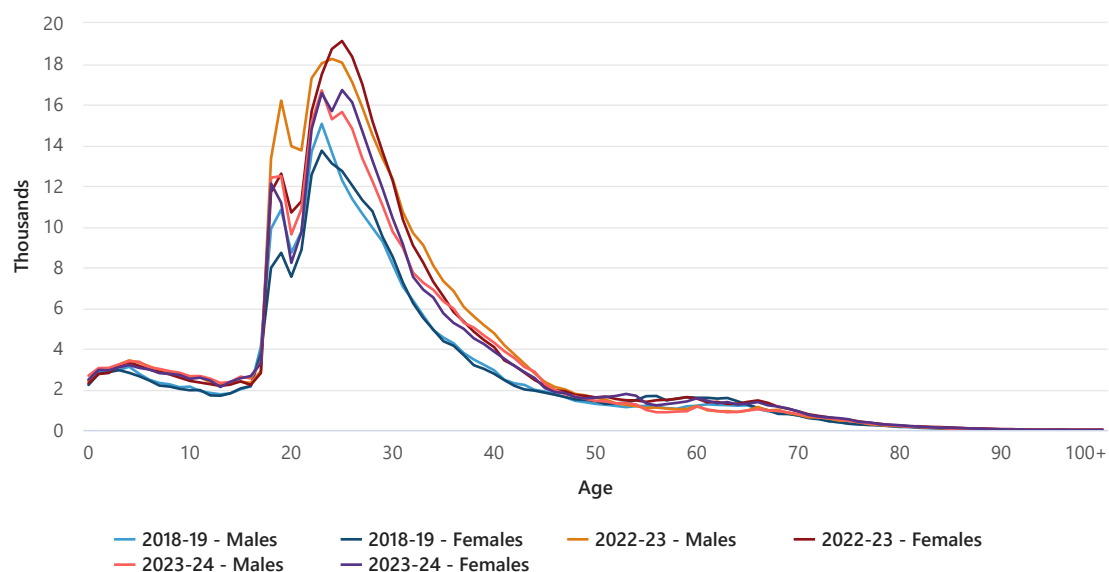
Mga pagdating

In 2023-24, the median age of migrant arrivals was 27 and the modal age was 23. Of the 23-year-old arrivals, 57% were international students and 21% were working holiday makers.

Prior to the pandemic in 2018-19, the median age of migrant arrivals was 26 and the modal age was 23.

There were more female than male migrant arrivals in 2023-24, which was recorded as a sex ratio of 99. In 2018-19 (pre-pandemic) there were more male than female migrants, with a sex ratio of 102.

Graph 4.1 Overseas migrant arrivals(a) - age and sex



a. Estimates for 2023-24 are preliminary. See revision status on the methodology page.

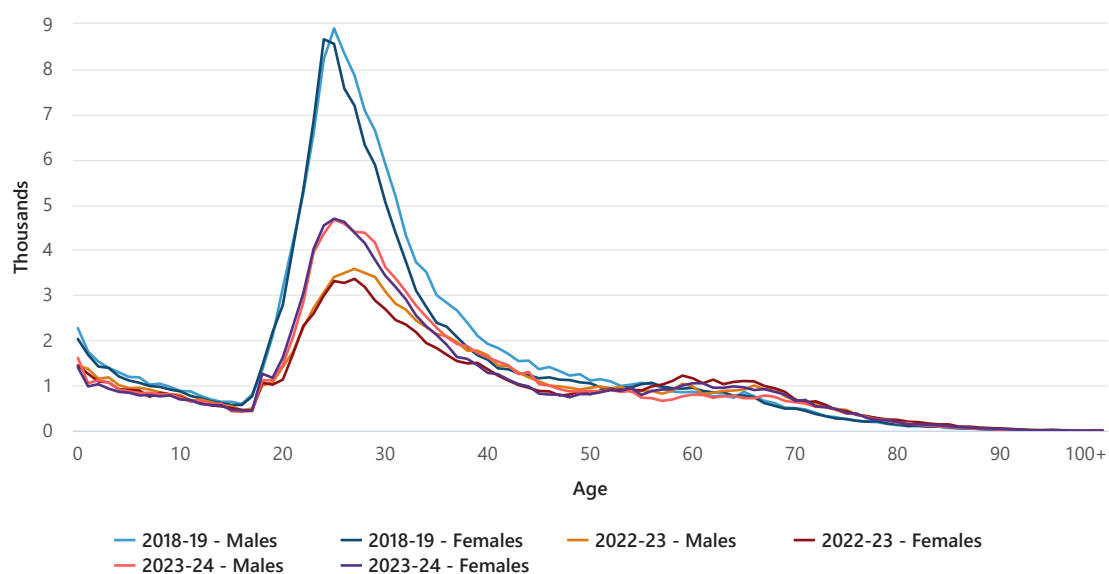
Mga pag-alis

In 2023-24, the median age of migrant departures was 31 and the modal age was 25. Of the 25-year-old departures, 31% were international students and 29% were Australian citizens.

Prior to the pandemic in 2018-19, the median age was 28 and the modal age was 25.

There were more male than female migrant departures in 2023-24, which was recorded as a sex ratio of 101. This was lower than the sex ratio in 2018-19 (pre-pandemic) which was 109.

Graph 4.2 Overseas migrant departures(a) - age and sex



a. Estimates for 2023-24 are preliminary. See revision status on the methodology page.

Estado at teritoryo

Net sa ibang bansa migration

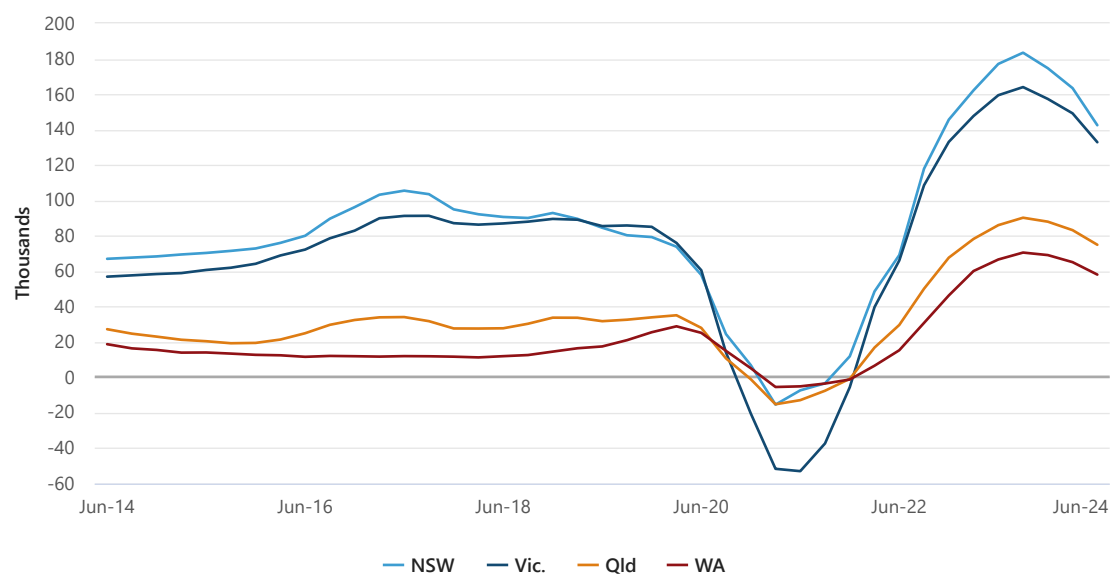
In 2023-24, overseas migration contributed a net gain of 445,640 people to the Australian population.

Individually, every state and territory recorded a net gain to their respective populations:

- NSW – a net gain of 142,470 people
- Vic. – gain of 132,860
- Qld – gain of 74,930
- SA – gain of 23,270
- WA – gain of 58,080
- Tas. – gain of 3,820
- NT – gain of 3,640
- ACT – gain of 6,520.

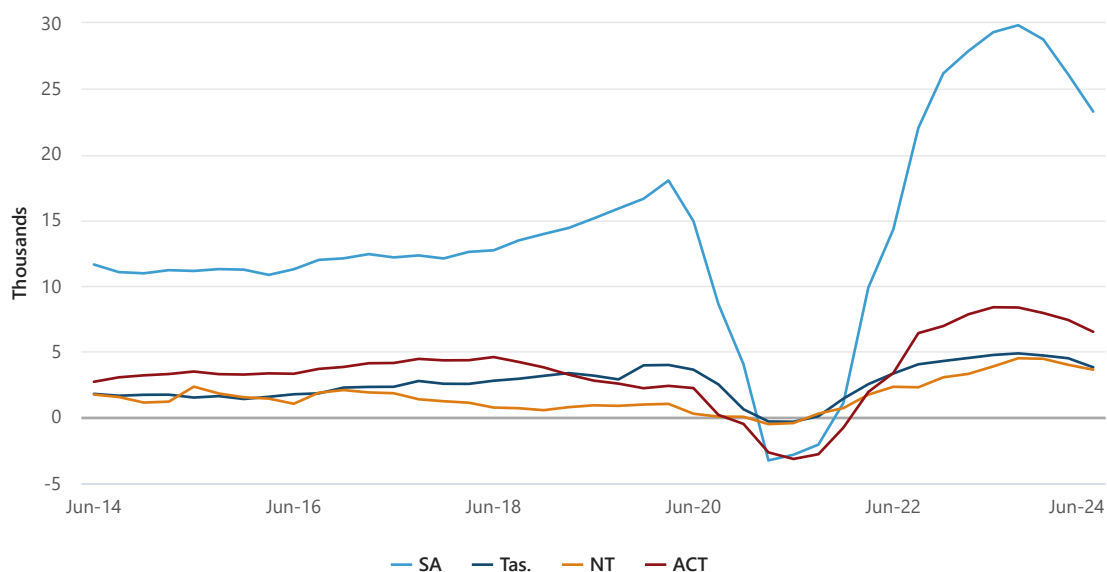
During the pandemic, in 2020-21, overseas migration contributed a net loss to the population of each state and territory. In contrast, in the five years prior to the pandemic, a net gain was recorded in each state and territory.

Graph 5.1 Net overseas migration(a) - larger states(b) - year ending



a. Estimates from September quarter 2023 onwards are preliminary. See revision status on the methodology page.
b. Based on the states with the largest volume of migrant arrivals and migrant departures in year ending June 2024.

Graph 5.2 Net overseas migration(a) - smaller states and territories(b) - year ending



a. Estimates from September quarter 2023 onwards are preliminary. See revision status on the methodology page.

b. Based on the states and territories with the smallest volume of migrant arrivals and migrant departures in year ending June 2024.

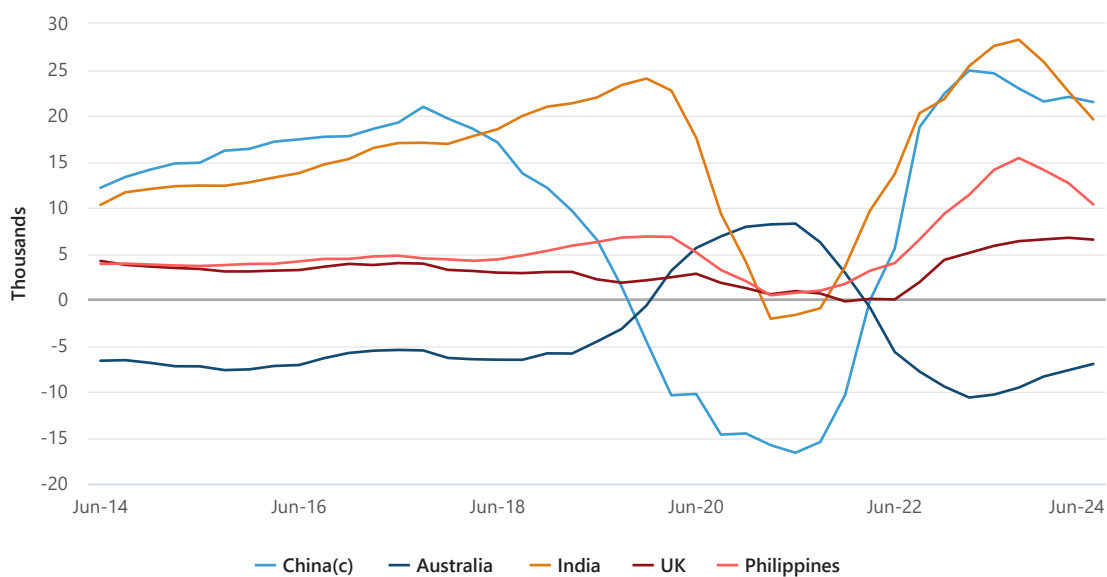
Bansang sinilangan

Historically, overseas migration has contributed a net gain to Australia's population, with migrants coming from many countries across the globe.

The top countries of birth contributing to changes in population vary for different states and territories. In 2023-24, the top country of birth contributing the largest net gain to each population was:

- India for Vic., Qld, SA, Tas. and NT,
- China for NSW and ACT,
- Bhutan for WA.

Graph 5.3 Net overseas migration for NSW(a) – top 5 countries of birth(b) – year ending

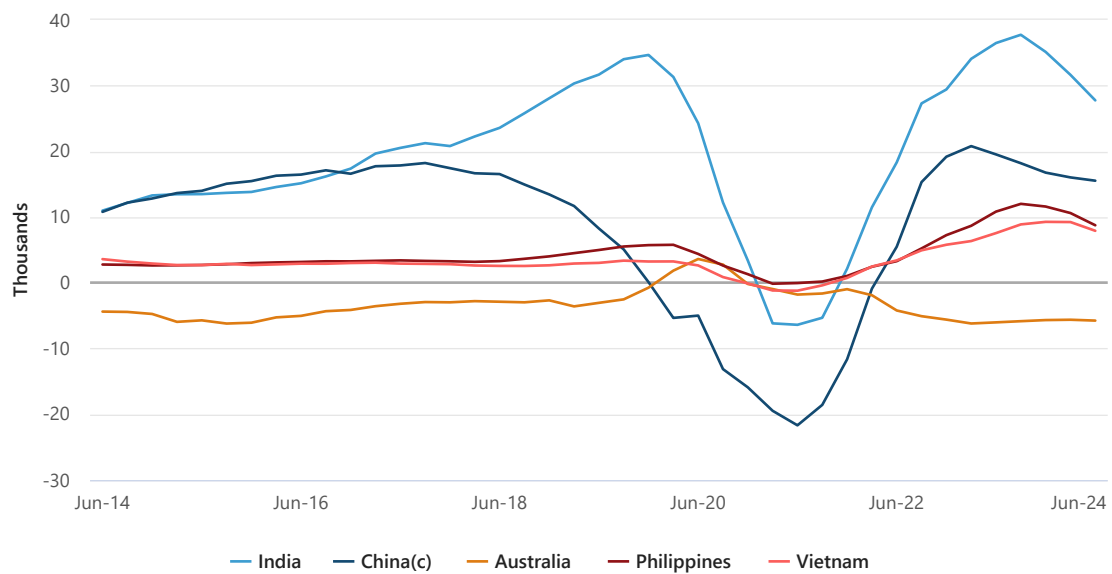


a. Estimates for 2023-24 are preliminary. See revision status on the methodology page.

b. Top 5 countries of birth by the sum of migrant arrivals and migrant departures in year ending June 2024 in New South Wales.

c. Excludes SARs and Taiwan.

Graph 5.4 Net overseas migration for Vic.(a) – top 5 countries of birth(b) – year ending

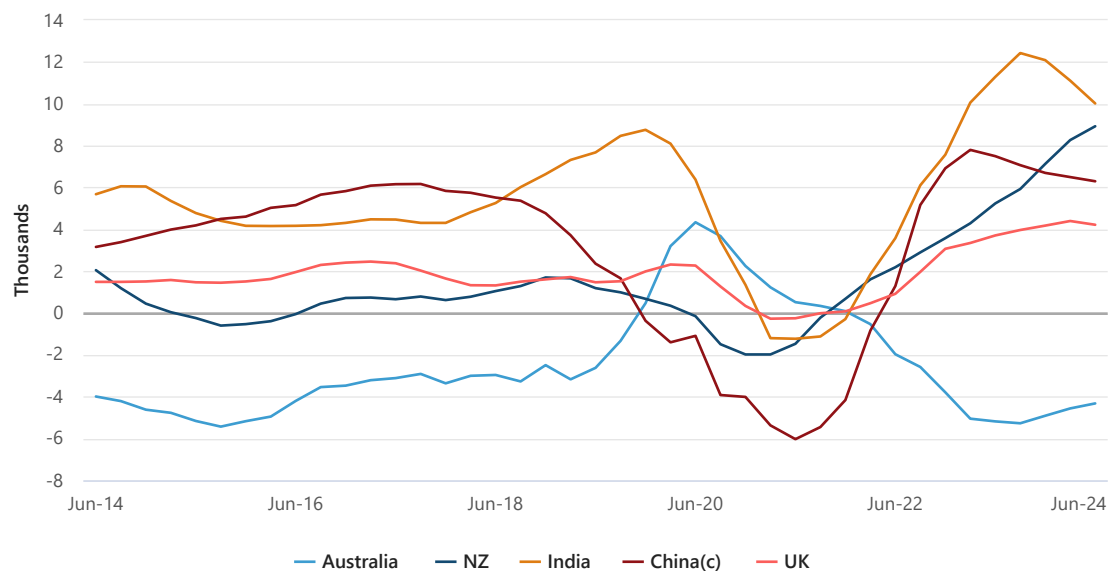


a. Estimates for 2023-24 are preliminary. See revision status on the methodology page.

b. Top 5 countries of birth by the sum of migrant arrivals and migrant departures in year ending June 2024 in Victoria.

c. Excludes SARs and Taiwan.

Graph 5.5 Net overseas migration for Qld(a) – top 5 countries of birth(b) – year ending

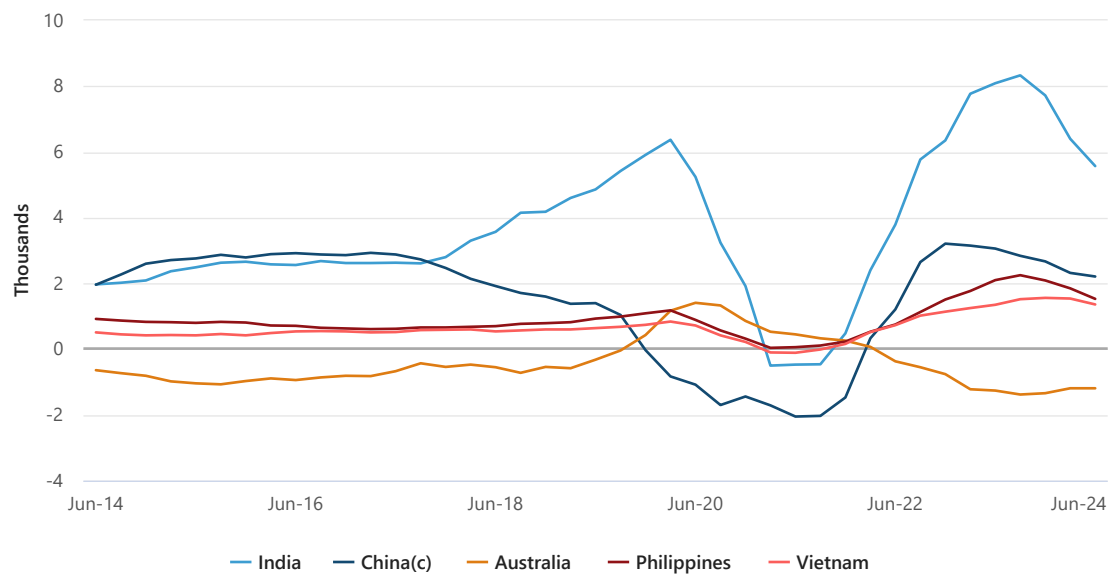


a. Estimates for 2023-24 are preliminary. See revision status on the methodology page.

b. Top 5 countries of birth by the sum of migrant arrivals and migrant departures in year ending June 2024 in Queensland.

c. Excludes SARs and Taiwan.

Graph 5.6 Net overseas migration for SA(a) – top 5 countries of birth(b) – year ending

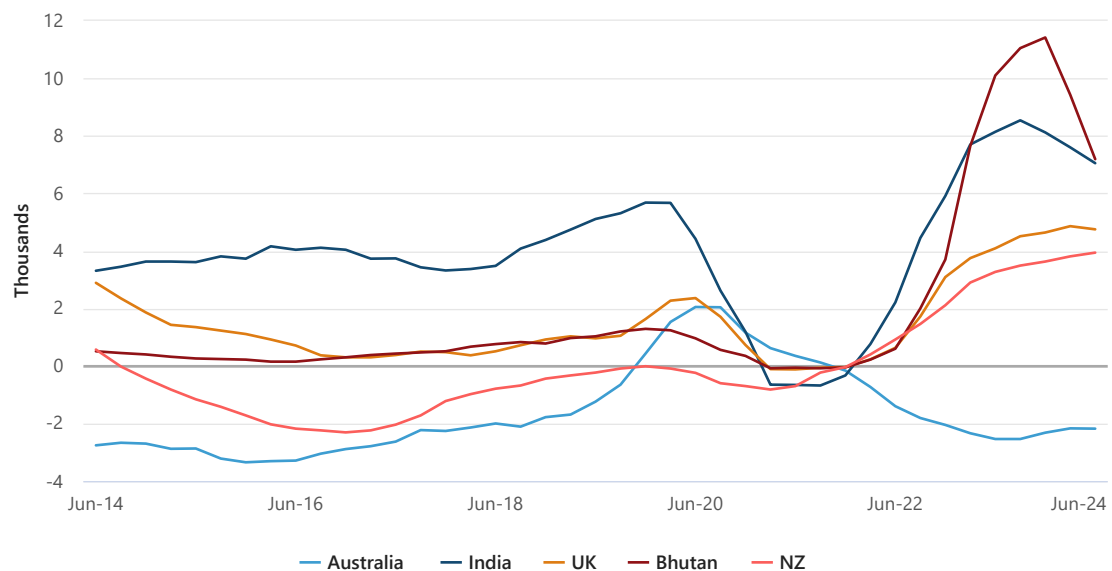


a. Estimates for 2023-24 are preliminary. See revision status on the methodology page.

b. Top 5 countries of birth by the sum of migrant arrivals and migrant departures in year ending June 2024 in South Australia.

c. Excludes SARs and Taiwan.

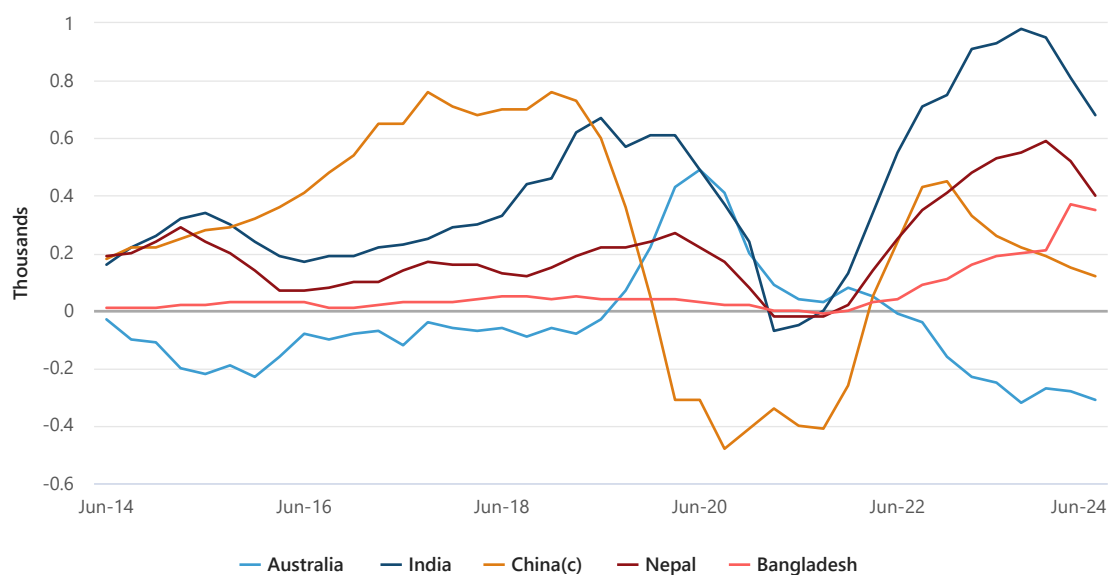
Graph 5.7 Net overseas migration for WA(a) – top 5 countries of birth(b) – year ending



a. Estimates for 2023-24 are preliminary. See revision status on the methodology page.

b. Top 5 countries of birth by the sum of migrant arrivals and migrant departures in year ending June 2024 in Western Australia.

Graph 5.8 Net overseas migration for Tas.(a) – top 5 countries of birth(b) – year ending

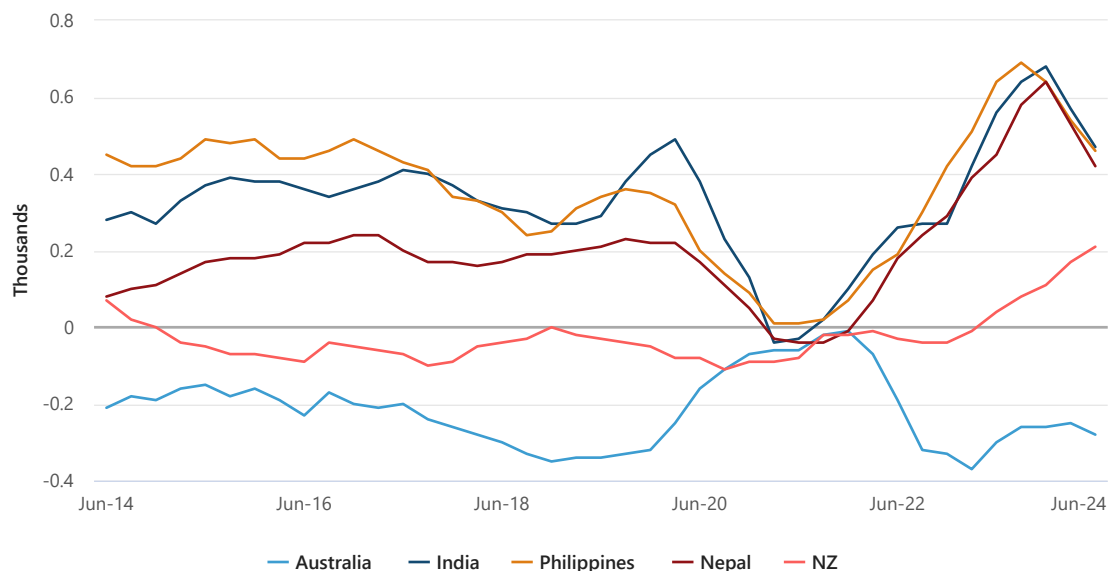


a. Estimates for 2023-24 are preliminary. See revision status on the methodology page.

b. Top 5 countries of birth by the sum of migrant arrivals and migrant departures in year ending June 2024 in Tasmania.

c. Excludes SARs and Taiwan.

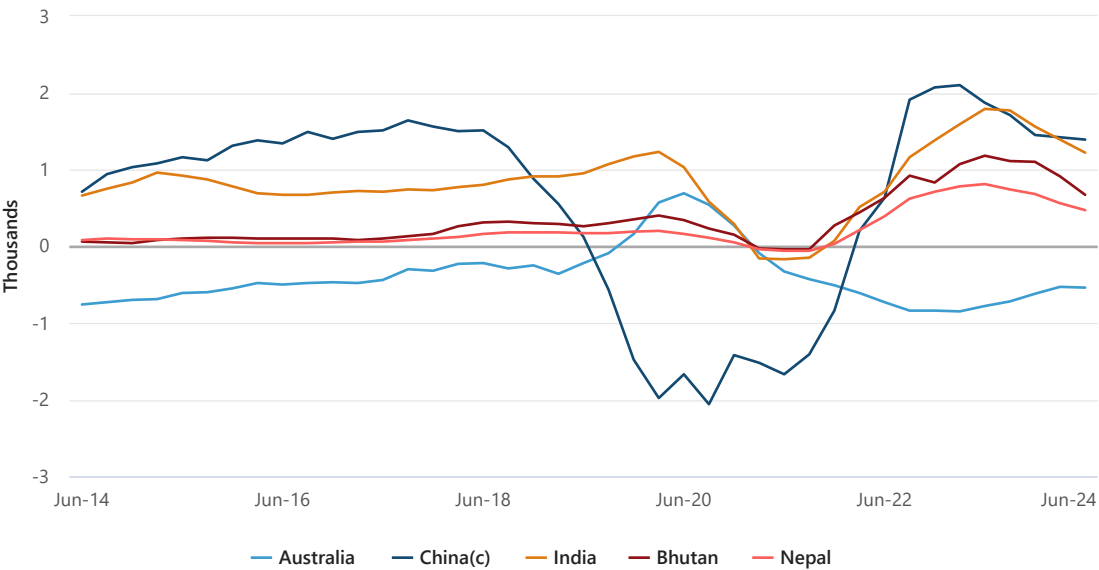
Graph 5.9 Net overseas migration for NT(a) – top 5 countries of birth(b) – year ending



a. Estimates for 2023-24 are preliminary. See revision status on the methodology page.

b. Top 5 countries of birth by the sum of migrant arrivals and migrant departures in year ending June 2024 in the Northern Territory.

Graph 5.10 Net overseas migration for ACT(a) – top 5 countries of birth(b) – year ending



- a. Estimates for 2023-24 are preliminary. See revision status on the methodology page.
- b. Top 5 countries of birth by the sum of migrant arrivals and migrant departures in year ending June 2024 in the Australian Capital Territory.
- c. Excludes SARs and Taiwan.

Edad

In 2023-24 across the states and territories, the median age of:

- migrant arrivals varied from 26 to 28 years of age
- migrant departures varied from 30 to 33 years of age.

In 2018-19 across the states and territories, prior to the pandemic the median age of:

- migrant arrivals varied from 26 to 28 years of age, which was the same as 2023-24
- migrant departures varied from 27 to 30 years of age, which was lower than in 2023-24.

Table 5.11 Migrant arrivals and departures - median age(a) by state and territory

	NSW	Vic.	Qld	SA	WA	Tas.	NT	ACT	Aust.(b)
2023-24(c)									
Arrivals	26.5	26.3	26.9	26.6	27.3	28.1	27.6	26.2	26.6
Departures	30.6	30.3	30.1	30.9	31.5	32.1	32.8	30.0	30.5
2022-23									
Arrivals	26.4	26.5	27.1	26.6	27.7	28.1	27.7	25.9	26.8
Departures	32.6	32.2	31.4	32.2	33.3	32.5	30.8	31.8	32.3
2018-19 (pre-COVID)									
Arrivals	26.5	25.9	26.7	26.2	27.6	26.9	27.6	26.5	26.4
Departures	28.6	28.0	28.3	28.3	29.7	28.8	29.8	27.3	28.5

- a. Median age is the age at which half the population is older and half is younger.
- b. Includes Other Territories.
- c. Estimates for 2023-24 are preliminary. See revision status on the methodology page.

kasarian

For migrant arrivals in 2023-24:

- there were more males than females for NSW, WA, Tas. and NT
- WA had the highest sex ratio (109) and ACT had the lowest sex ratio (88).

For migrant departures:

- there were more males than females for every state and territory except Vic. and ACT in 2023-24
- Tas. had the highest sex ratio (117) and ACT had the lowest sex ratio (99).

Table 5.12 Migrant arrivals and departures - sex ratio(a) by state and territory

	NSW	Vic.	Qld	SA	WA	Tas.	NT	ACT	Aust.(b)
2023-24(c)									
Arrivals	100.9	94.0	99.5	99.6	108.9	103.7	107.8	87.5	99.3
Departures	100.6	99.0	101.1	106.5	108.1	116.8	108.6	98.8	101.5
2022-23									
Arrivals	104.5	100.3	100.9	106.1	112.5	100.0	114.5	94.2	103.5
Departures	104.0	102.8	108.2	108.9	105.9	132.2	194.4	104.2	106.0
2018-19 (pre-COVID)									
Arrivals	101.7	103.2	98.4	100.6	100.7	101.4	123.3	97.7	101.6
Departures	106.6	104.4	111.2	106.3	117.0	114.9	205.7	104.4	108.9

a. Sex ratio is the number of males per 100 females.

b. Includes Other Territories.

c. Estimates for 2023-24 are preliminary. See revision status on the methodology page.

Mga kaugnay na publikasyon ng ABS

[Populasyon ng pambansa, estado at teritoryo](https://www-abs-gov-au.translate.goog/statistics/people/population/national-state-and-territory-population/latest-release? x_tr_sl=auto& x_tr_tl=tl& x_tr_hl=en& x_tr_pto=wapp) (https://www-abs-gov-au.translate.goog/statistics/people/population/national-state-and-territory-population/latest-release? x_tr_sl=auto& x_tr_tl=tl& x_tr_hl=en& x_tr_pto=wapp).

- kasama ang quarterly na data sa netong paglipat sa ibang bansa at mga pagtatantya ng netong paglipat sa pagitan ng estado.

[Populasyon ng rehiyon](https://www-abs-gov-au.translate.goog/statistics/people/population/regional-population/latest-release? x_tr_sl=auto& x_tr_tl=tl& x_tr_hl=en& x_tr_pto=wapp) (https://www-abs-gov-au.translate.goog/statistics/people/population/regional-population/latest-release? x_tr_sl=auto& x_tr_tl=tl& x_tr_hl=en& x_tr_pto=wapp).

- kasama ang taunang data sa paglipat sa ibang bansa ng rehiyon at mga pagtatantya ng panloob na paglipat ng rehiyon.

[Overseas arrivals and departures, Australia](https://www-abs-gov-au.translate.goog/statistics/industry/tourism-and-transport/overseas-arrivals-and-departures-australia/latest-release? x_tr_sl=auto& x_tr_tl=tl& x_tr_hl=en& x_tr_pto=wapp) (https://www-abs-gov-au.translate.goog/statistics/industry/tourism-and-transport/overseas-arrivals-and-departures-australia/latest-release? x_tr_sl=auto& x_tr_tl=tl& x_tr_hl=en& x_tr_pto=wapp).

- monthly statistics on all international travel arriving in and departing from Australia.

[Australia's population by country of birth](https://www-abs-gov-au.translate.goog/statistics/people/population/australias-population-country-birth/latest-release? x_tr_sl=auto& x_tr_tl=tl& x_tr_hl=en& x_tr_pto=wapp) (https://www-abs-gov-au.translate.goog/statistics/people/population/australias-population-country-birth/latest-release? x_tr_sl=auto& x_tr_tl=tl& x_tr_hl=en& x_tr_pto=wapp).

- statistics on Australia's estimated resident population by country of birth.

[Permanent migrants in Australia](https://www-abs-gov-au.translate.goog/statistics/people/people-and-communities/permanent-migrants-australia/latest-release? x_tr_sl=auto& x_tr_tl=tl& x_tr_hl=en& x_tr_pto=wapp) (https://www-abs-gov-au.translate.goog/statistics/people/people-and-communities/permanent-migrants-australia/latest-release? x_tr_sl=auto& x_tr_tl=tl& x_tr_hl=en& x_tr_pto=wapp). — 2021

- statistics about permanent migrants who arrived in Australia between 1 January 2000 and 10 August 2021.

[Temporary visa holders in Australia](https://www-abs-gov-au.translate.goog/statistics/people/people-and-communities/temporary-visa-holders-australia/latest-release? x_tr_sl=auto& x_tr_tl=tl& x_tr_hl=en& x_tr_pto=wapp) (https://www-abs-gov-au.translate.goog/statistics/people/people-and-communities/temporary-visa-holders-australia/latest-release? x_tr_sl=auto& x_tr_tl=tl& x_tr_hl=en& x_tr_pto=wapp). — 2021

- statistics about selected types of temporary visa holders who were present in Australia on Census Night, 10 August 2021.

[Migrant settlement outcomes](https://www-abs-gov-au.translate.goog/statistics/people/people-and-communities/migrant-settlement-outcomes/latest-release? x_tr_sl=auto& x_tr_tl=tl& x_tr_hl=en& x_tr_pto=wapp) (https://www-abs-gov-au.translate.goog/statistics/people/people-and-communities/migrant-settlement-outcomes/latest-release? x_tr_sl=auto& x_tr_tl=tl& x_tr_hl=en& x_tr_pto=wapp). — 2024

- statistics on selected economic and social outcomes of permanent migrants.

[Personal income in Australia](https://www-abs-gov-au.translate.goog/statistics/labour/earnings-and-working-conditions/personal-income-australia/latest-release? x_tr_sl=auto& x_tr_tl=tl& x_tr_hl=en& x_tr_pto=wapp#migrants) (https://www-abs-gov-au.translate.goog/statistics/labour/earnings-and-working-conditions/personal-income-australia/latest-release? x_tr_sl=auto& x_tr_tl=tl& x_tr_hl=en& x_tr_pto=wapp#migrants). — migrant content

- Regional data on the number of income earners, amounts received, and the distribution of income for the 2021-22 financial year.

[Jobs in Australia](https://www-abs-gov-au.translate.goog/statistics/labour/jobs/jobs-australia/latest-release? x_tr_sl=auto& x_tr_tl=tl& x_tr_hl=en& x_tr_pto=wapp#employed-migrants) (https://www-abs-gov-au.translate.goog/statistics/labour/jobs/jobs-australia/latest-release? x_tr_sl=auto& x_tr_tl=tl& x_tr_hl=en& x_tr_pto=wapp#employed-migrants). — migrant content

- Information about the number and nature of filled jobs, the people who hold them and their employers.

[Personal income of migrants, Australia](https://www-abs-gov-au.translate.goog/statistics/people/people-and-communities/personal-income-migrants-australia/latest-release? x_tr_sl=auto& x_tr_tl=tl& x_tr_hl=en& x_tr_pto=wapp) (https://www-abs-gov-au.translate.goog/statistics/people/people-and-communities/personal-income-migrants-australia/latest-release? x_tr_sl=auto& x_tr_tl=tl& x_tr_hl=en& x_tr_pto=wapp). — 2016-17

- statistics on personal income of migrants including employee income, own unincorporated business income, investment income and other income.

Enquiries

For further information about these publications and related statistics visit [www.abs.gov.au/about/contact-us](https://www-abs-gov-au.translate.goog/about/contact-us? x_tr_sl=auto& x_tr_tl=tl& x_tr_hl=en& x_tr_pto=wapp) (https://www-abs-gov-au.translate.goog/about/contact-us? x_tr_sl=auto& x_tr_tl=tl& x_tr_hl=en& x_tr_pto=wapp).

Data downloads

Notes for time series spreadsheets

Estimates for 2023-24 are preliminary. Preliminary estimates are based on outputs from a propensity model rather than the actual migration outcomes of each traveller. Please take care when using the variables of preliminary estimates at this level of granularity as they may be subject to proportionally large revisions. See revision status on the methodology page.

The estimates in these tables use the 12/16 month rule methodology for calculating net overseas migration. They have not been used in compiling Australia's official estimated resident population (ERP) until September quarter 2006 and onwards. See method used on the methodology page.

To confidentialise, estimates have been rounded to the nearest 10. As a result, sums of the components may not add to totals. Calculations made on rounded data may differ to those published. See confidentiality on the methodology page.

Country classification and codes are from the [Standard Australian Classification of Countries \(SACC\), 2016](https://www-abs-gov-au.translate.goog/statistics/classifications/standard-australian-classification-countries-sacc/latest-release?_x_tr_sl=auto&_x_tr_tl=tl&_x_tr hl=en&_x_tr_pto=wapp) (https://www-abs-gov-au.translate.goog/statistics/classifications/standard-australian-classification-countries-sacc/latest-release?_x_tr_sl=auto&_x_tr_tl=tl&_x_tr hl=en&_x_tr_pto=wapp) (cat. no. 1269.0).

NOM statistics by visa group in this dataset are derived from the type of visa or citizenship held when the traveller migrates to or from Australia. These counts of number of migrations by visa type should not be confused with information on the number of visas granted (and also published) by the Department of Home Affairs. Over time, new visas created by Home Affairs are added to the visa hierarchy while the use of other visas may expire. Care should be taken in the analysis of overseas migration data by visa over time.

Caution should be exercised when netting overseas migrant arrivals and departures by visa. Careful consideration should be given to insights derived from net migration by visa, as individuals frequently depart on a different visa type than the one previously held at their time of arrival. E.g. a person who arrives on a student visa may depart on a temporary skilled visa, as just one possible example.

Time series spreadsheets

[Download all \(774.75 KB\)](#)

1. Net overseas migration by country of birth, state/territory - financial years, 2004-05 to 2023-24

[Download XLSX](#)
[295.25 KB]

2. Overseas migrant arrivals by country of birth, state/territory - financial years, 2004-05 to 2023-24

[Download XLSX](#)
[284.45 KB]

3. Overseas migrant departures by country of birth, state/territory - financial years, 2004-05 to 2023-24

[Download XLSX](#)
[269.48 KB]

4. Overseas migrant arrivals and departures by visa and citizenship groups, state/territory - financial years, 2004-05 to 2023-24

[Download XLSX](#)
[108.89 KB]

Data Explorer datasets

Caution: Data in the Data Explorer is currently released after the 11:30am release on the ABS website. Please check for the current reference period when using Data Explorer.

For information on Data Explorer and how it works, see the [Data Explorer user guide](https://www-abs-gov-au.translate.goog/about/data-services/data-explorer/data-explorer-user-guide?_x_tr_sl=auto&_x_tr_tl=tl&_x_tr hl=en&_x_tr_pto=wapp) (https://www-abs-gov-au.translate.goog/about/data-services/data-explorer/data-explorer-user-guide?_x_tr_sl=auto&_x_tr_tl=tl&_x_tr hl=en&_x_tr_pto=wapp).

Notes for Data Explorer datasets

Estimates for 2023-24 are preliminary. Preliminary estimates are based on outputs from a propensity model rather than the actual migration outcomes of each traveller. Please take care when using the variables of preliminary estimates at this level of granularity as they may be subject to proportionally large revisions. See revision status on the methodology page.

The estimates in these tables use the 12/16 month rule methodology for calculating net overseas migration. They have not been used in compiling Australia's official estimated resident population (ERP) until September quarter 2006 and onwards. See method used on the methodology page.

To confidentialise, estimates have been rounded to the nearest 10. As a result, sums of the components may not add to totals. Calculations made on rounded data may differ to those published. See confidentiality on the methodology page.

Country classification and codes are from the [Standard Australian Classification of Countries \(SACC\), 2016](https://www-abs-gov-au.translate.goog/statistics/classifications/standard-australian-classification-countries-sacc/latest-release?_x_tr_sl=auto&_x_tr_tl=tl&_x_tr_hl=en&_x_tr_pto=wapp) (https://www-abs-gov-au.translate.goog/statistics/classifications/standard-australian-classification-countries-sacc/latest-release?_x_tr_sl=auto&_x_tr_tl=tl&_x_tr_hl=en&_x_tr_pto=wapp) (cat. no. 1269.0).

NOM statistics by visa group in this dataset are derived from the type of visa or citizenship held when the traveller migrates to or from Australia. These counts of number of migrations by visa type should not be confused with information on the number of visas granted (and also published) by the Department of Home Affairs. Over time, new visas created by Home Affairs are added to the visa hierarchy while the use of other visas may expire. Care should be taken in the analysis of overseas migration data by visa over time.

Caution should be exercised when netting overseas migrant arrivals and departures by visa. Careful consideration should be given to insights derived from net migration by visa, as individuals frequently depart on a different visa type than the one previously held at their time of arrival. E.g. a person who arrives on a student visa may depart on a temporary skilled visa, as just one possible example.

Financial years

[Overseas migration, arrivals, departures and net, state/territory, age and sex - financial years, 2004-05 onwards](https://translate.google.com/website?sl=auto&tl=tl&hl=en&client=webapp&u=https://explore.data.abs.gov.au/vis?tm%3DMigration%26pg%3D0%26df%5Bds%5D%3DABS_ABS_TOPICS%26df%5Bid%5D%3DNOM_FY%26df%5Bag%5D%3DABS%26df%5Bvs%5D%3D1.0.0) (https://translate.google.com/website?sl=auto&tl=tl&hl=en&client=webapp&u=https://explore.data.abs.gov.au/vis?tm%3DMigration%26pg%3D0%26df%5Bds%5D%3DABS_ABS_TOPICS%26df%5Bid%5D%3DNOM_FY%26df%5Bag%5D%3DABS%26df%5Bvs%5D%3D1.0.0)

Calendar years

[Overseas migration, arrivals, departures and net, state/territory, age and sex - calendar years, 2004 onwards](https://translate.google.com/website?sl=auto&tl=tl&hl=en&client=webapp&u=https://explore.data.abs.gov.au/vis?tm%3DMigration%26pg%3D0%26df%5Bds%5D%3DABS_ABS_TOPICS%26df%5Bid%5D%3DNOM_CY%26df%5Bag%5D%3DABS%26df%5Bvs%5D%3D1.0.0) (https://translate.google.com/website?sl=auto&tl=tl&hl=en&client=webapp&u=https://explore.data.abs.gov.au/vis?tm%3DMigration%26pg%3D0%26df%5Bds%5D%3DABS_ABS_TOPICS%26df%5Bid%5D%3DNOM_CY%26df%5Bag%5D%3DABS%26df%5Bvs%5D%3D1.0.0)

Quarterly

[Migration sa ibang bansa, pagdating, pag-alis, estado/teritoryo, visa at mga grupo ng pagkamamamayan - quarterly at financial years, 2006 Q3 onwards](https://translate.google.com/website?sl=auto&tl=tl&hl=en&client=webapp&u=https://explore.data.abs.gov.au/vis?fs%5B0%5D%3DPeople%252C1%257CPopulation%2523POPULATION%2523%257COverseas%2520Migration%2523OVERSEAS_MIGRATION%2523%26pg%3D0%26fc%3DPeople%26df%5Bds%5D%3DPEOPLE_TOPICS%26df%5Bid%5D%3DOMAD_VISA%26df%5Bag%5D%3DABS%26df%5Bvs%5D%3D1.0.0) (https://translate.google.com/website?sl=auto&tl=tl&hl=en&client=webapp&u=https://explore.data.abs.gov.au/vis?fs%5B0%5D%3DPeople%252C1%257CPopulation%2523POPULATION%2523%257COverseas%2520Migration%2523OVERSEAS_MIGRATION%2523%26pg%3D0%26fc%3DPeople%26df%5Bds%5D%3DPEOPLE_TOPICS%26df%5Bid%5D%3DOMAD_VISA%26df%5Bag%5D%3DABS%26df%5Bvs%5D%3D1.0.0)

Tagabuo ng Mesa

[TableBuilder: Net na paglipat sa ibang bansa](https://www-abs-gov-au.translate.goog/statistics/microdata-tablebuilder/available-microdata-tablebuilder/net-overseas-migration?_x_tr_sl=auto&_x_tr_tl=tl&_x_tr_hl=en&_x_tr_pto=wapp) (https://www-abs-gov-au.translate.goog/statistics/microdata-tablebuilder/available-microdata-tablebuilder/net-overseas-migration?_x_tr_sl=auto&_x_tr_tl=tl&_x_tr_hl=en&_x_tr_pto=wapp)

Pamamaraan

[Pamamaraan ng Overseas Migration, 2023-24 financial year](https://www-abs-gov-au.translate.goog/statistics/people/population/overseas-migration/latest-release?_x_tr_sl=auto&_x_tr_tl=tl&_x_tr_hl=en&_x_tr_pto=wapp)